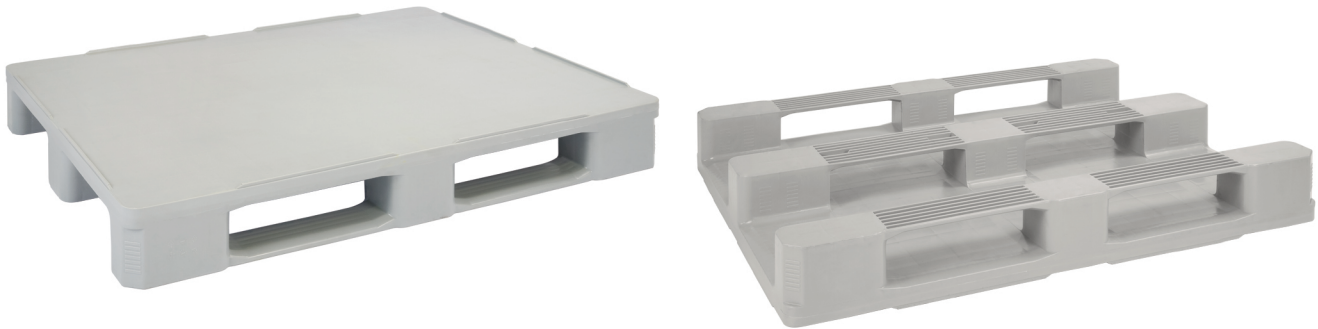


▶ HP1210/3R/5P

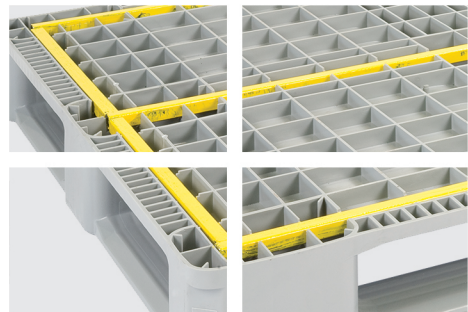
Hygienic Plastic Pallet (Reinforced)



Specifications:

Material	HDPE/PP Inj. Grade + UV Stabilizer
Dimension	1200 x 1000 x 160 mm
Static Load	7500 Kg
Dynamic Load	2000 Kg
Racking Load	2000 Kg
Pallet Weight	27.5 Kg (±3%)
40' HC Cntr/88 m ³ TRK Capacity	451 / 520 Pcs

More details:



Properties:

- Single surface
- Closed solid top deck
- 5 reinforcement profiles
- 7 mm safety rims
- 3 Skid runners
- 4-way entry
- Forklift / Hand-jack compatible
- Welded
- Stackable

Customization:

- Any standard RAL color
- Anti-slip strips option (2-4 Pcs)
- Embossing logo
- Printing logo
- Safety rims

